

IO/LDM1/24 & IO/LDM1/240



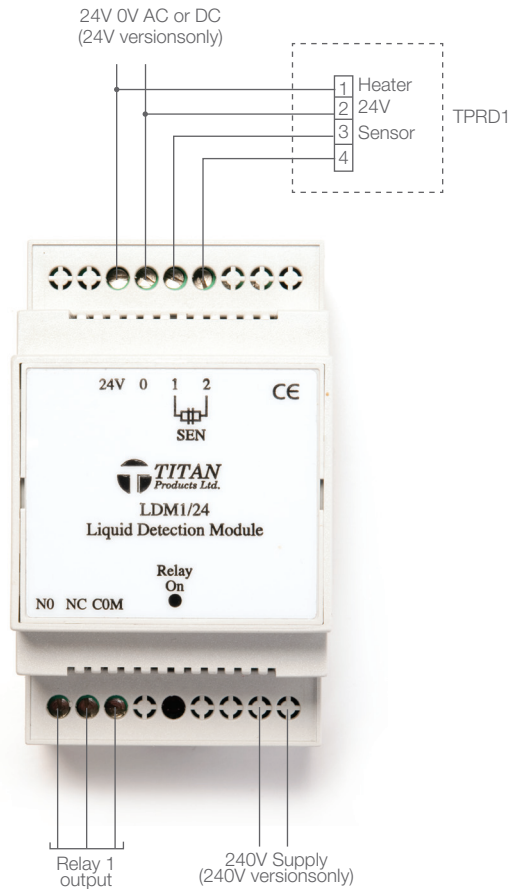
The LDM1 module is designed to detect the presence of water or other conducting liquids. The module incorporates a voltfree changeover relay with LED status indication. The relay is energised when water/rain is detected after a preset delay time and remains energised for the duration of water being detected.

The LDM1 is available to operate on either a 24V or 240V supply and can be used with the TITAN Rain Detector TPRD1 or the Flood detector TPF/D.

Specification

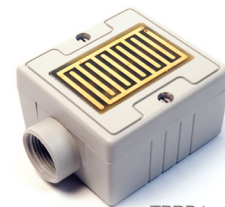
Inputs:	TPRD1 rain detector (4 wire) or TPF/D flood detector (2 wire)
Output:	1 x Voltfree changeover relay Rated 24V or 240V 5 amp max.
Power Supply:	24V AC/DC or 240V AC/DC + 15%
Power Consumption:	40mA max
Fixed Setting:	Delay On Time 6 seconds
Terminal:	Max cable size 2mm
LED indication:	Relay ON
Operating Temperature:	-10 to +40°C
IP Rating:	Rain Detector: IP65 Enclosure IP20:
Dimensions:	LDM1: 90mm high, 55mm wide, 58mm deep Rain Detector: 75mm high, 60mm wide, 36mm deep
Product Codes:	LDM1/24 LDM1/240 TPRD1 (Rain Detector) TPFD (Flood Detector)

Connections



TPRD1 & TPF/D/P

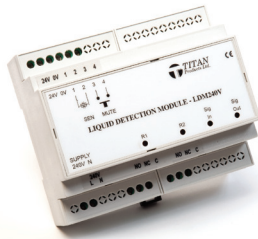
To work in conjunction with the Liquid Detection Module, TITAN Products can provide sensors that operate with conductive liquids. The TPRD1 is specifically designed to detect the presence of rain. The TPRD1 incorporates a heater to evaporate any residual moisture after a rain fall which speeds up the dry detection rate. The TPF/D/P is specifically designed to detect the presence of conducting liquids at low level and with the two 50mm long stainless steel probes it is particularly useful in plant rooms or under false floors.



TPRD1



TPFD/P



IO/LDM24 & IO/LDM240

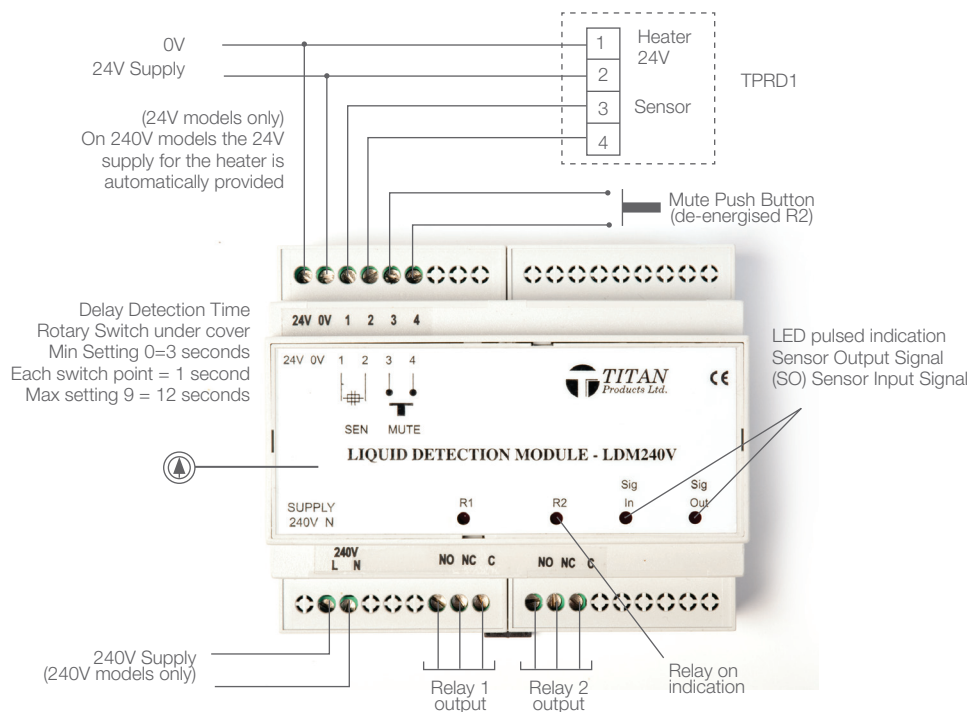
The LDM Module is designed to detect the presence of water or other conducting liquids. The module incorporates two voltfree changeover relays with LED status indication. Both relays are energised when water is detected R2 can be used for an audible alarm which can be muted during water detection via a mute push button input whilst R1 remains energised for the duration of water being detected.

The LDM is available in 24V or 240V versions and can be used with the Titan Rain Detector TPRD1 or the Flood Detector TPFDF.

Specification

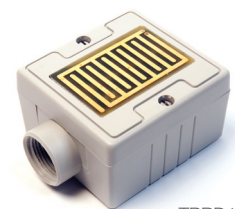
Input (Signal):	TPRD1 rain detector TPFD Flood detector Volfree push button for mute (R2)
Output:	2 x Voltfree changeover relays
Power Supply:	240V AC or 24V AC/DC +/- 15%
Power Consumption:	60mA max
Settings:	Delay timer 3 to 12 seconds
LED Indication:	Relay ON Detector Signal Status
Terminals:	Max cable size 2.0mm
Operating Temp:	-10 to +40°C
Dimensions:	92mm high, 106mm wide, 58mm deep
Product Code:	LDM24 for 24V supply LDM240 for 240V supply TPRD1 Rain Detector TPFD Flood Detection

Connections



TPRD1 & TPFDF

To work in conjunction with the Liquid Detection Module, TITAN Products can provide sensors that operate with conductive liquids. The TPRD1 is specifically designed to detect the presence of rain. The TPRD1 incorporates a heater to evaporate any residual moisture after a rain fall which speeds up the dry detection rate. The TPFDF/P is specifically designed to detect the presence of conducting liquids at low level and with the two 50mm long stainless steel probes it is particularly useful in plant rooms or under false floors.



TPRD1



TPFDF/P